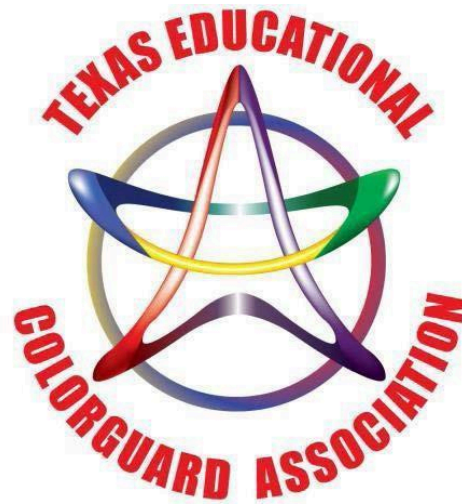




Weslaco East High School Invitational

March 09, 2024



**A TECA sanctioned contest hosted by:
Weslaco East HS Starling Silks Colorguard,
Weslaco East Regiment Winds & Wildcat Regiment**

Contact Information:

Armando Cuellar, Director of Bands: AECUELLAR@wisd.us

Laura Cedillo-Rivera, Starling Silks Director: LACEDILLO@wisd.us

Jesus Gallegos, Regiment Winds Director: JEGALLEGOS@wisd.us

Weslaco East High School Invitational Information

LOCATION, DIRECTIONS, AND MAP:

Location: *Weslaco East High School, 810 S. Pleasantview Dr., Weslaco, TX 78596*

FROM SAN ANTONIO AREA

Get on I-37S/US-281 S. Continue on I-37S. Take US-281 to E Expressway 83/E Frontage Rd in Weslaco. Take the exit toward Airport Dr/Pike Blvd from I-2. Merge onto E. Expressway 83/E Frontage Rd. Turn right onto N Airport Dr. Turn left onto E. 8th St. The entrance should be straight ahead.

FROM CORPUS CHRISTI AREA

Head southwest toward I-37N. Continue on I-37N. Take US-77 S, I-69E S and I-2/US-83 W to E Expressway 83/W Frontage Rd in Weslaco. Take the exit toward Airport Dr/Pike Blvd from I-2/US-83 W. Merge onto E Expressway 83/W Frontage Rd. Turn left onto N Airport Dr. Turn left on E 8th St. The entrance should be straight ahead.

Parking:

Buses will continue down Airport Dr. (Mile 4 Rd W) & enter through 8th St. (this leads to our bus area) Trucks will need to continue to Pleasantview and utilize this entrance gate

Spectators will enter from E. Business 83 and turn right to park within the parking lot near the main building [PLEASE SEE [MAP](#)]

CONTEST INFORMATION:

All Contest rules and regulations from the 2024 TECA Constitution and By-Laws and the 2024 WGI Rule Book will be followed.

All props, performance shoes and equipment must be padded and taped according to the TECA and WGI rule book specifications.

Check In:

The check-in table will be located in the main building by the Staff Development room as you enter from the bus area (Drop Off). Performers must show the Check-In Representative that their equipment is correctly padded and taped. Directors will be provided a map of the school as well as the schedule with performance times.

Performing members and crew members must check in at the check-in table prior to warm up. Admission will be given to 2 directors, 2 bus drivers, and up to 10 student crew members. Additional admission may be purchased at the check-in table for additional crew members at a cost of \$3 per student

Holding Area:

Tables will be set up in the cafeteria for each group to store their personal items. Props/Floors and larger equipment may be stored in the hallways just before the check-in tables or along the hallway to body warm up.

Concessions will be available in the gym lobby for anyone to purchase. Outside food or drink will not be allowed inside the school.

The cafeteria and within the school buildings are traffic areas only. Students will not spin, toss, play or maneuver equipment inside any of the buildings at any time other than in designated areas. If you need any extra equipment warm up time, you may do so outside in designated areas.

OFFICIAL WARM UP AND PERFORMANCE TIMES:

Guard

When it is time for your group to be “READY”, please report to the ready table inside the cafeteria. You will be escorted by a monitor from there to each warm up area.

Body Warm up will be within our main band hall room. Students may stretch or do a body type of run through. NO equipment will be allowed during this segment of the official warm up time.

Following your body warm up, you will be led to our small gym for equipment warm up. A sound system will be made available to you in the warm up areas.

Following your warm ups, you will be led to the performance area, our main gym through the back hallway. Once you are done with your performance, you will exit out to the cafeteria holding area- those with floors will be led to the floor folding area between our fine arts buildings. You may re-enter the gym to view other groups through the main lobby- please present your stamp/band for entrance.

Winds/Percussion

When it is time for your group to be “READY”, please report to the ready table inside the cafeteria. You will be escorted by a monitor from there to each warm up area.

Your monitor will lead your unit to the small gym for your warm up time. After this, your unit will be led to the performance area, our main gym, through the back hallway. Following your performance, your unit will exit out of the gym to the cafeteria holding area or to floor folding between our fine arts buildings. You may re-enter the gym through the main lobby to view other groups- please present your stamp/band for entrance.

Post-Performance

Once your performance is complete, you will exit the performance area as directed in the contest flow (see map above). Staff members will need to make sure that all of their equipment is put away and that nothing was left on the performance floor. Floor folding is located between our fine arts building- please fold floors quickly and exit the area to prevent a “traffic jam.”

CAPTAINS ONLY RETREAT will follow the last performing group as scheduled. There will be an announcement made as to where captains will meet.

SPECTATOR INFORMATION

Spectator Admission

Wristbands will be sold at the spectator entrance. All spectators must have a wristband to enter the competition. Admission is \$8.00, cash only. (Children under 5 free). **WISD will require the clear bag policy- please see below for more information**

Concessions

Concessions will be available throughout the day in the gym lobby. No outside food or drink will be allowed inside the school.

Souvenirs & Shout Outs

If you wish to show support and congratulate your participants, shout-outs in the gym will be available for purchase- \$3 for one or \$5 for two. Cash only.

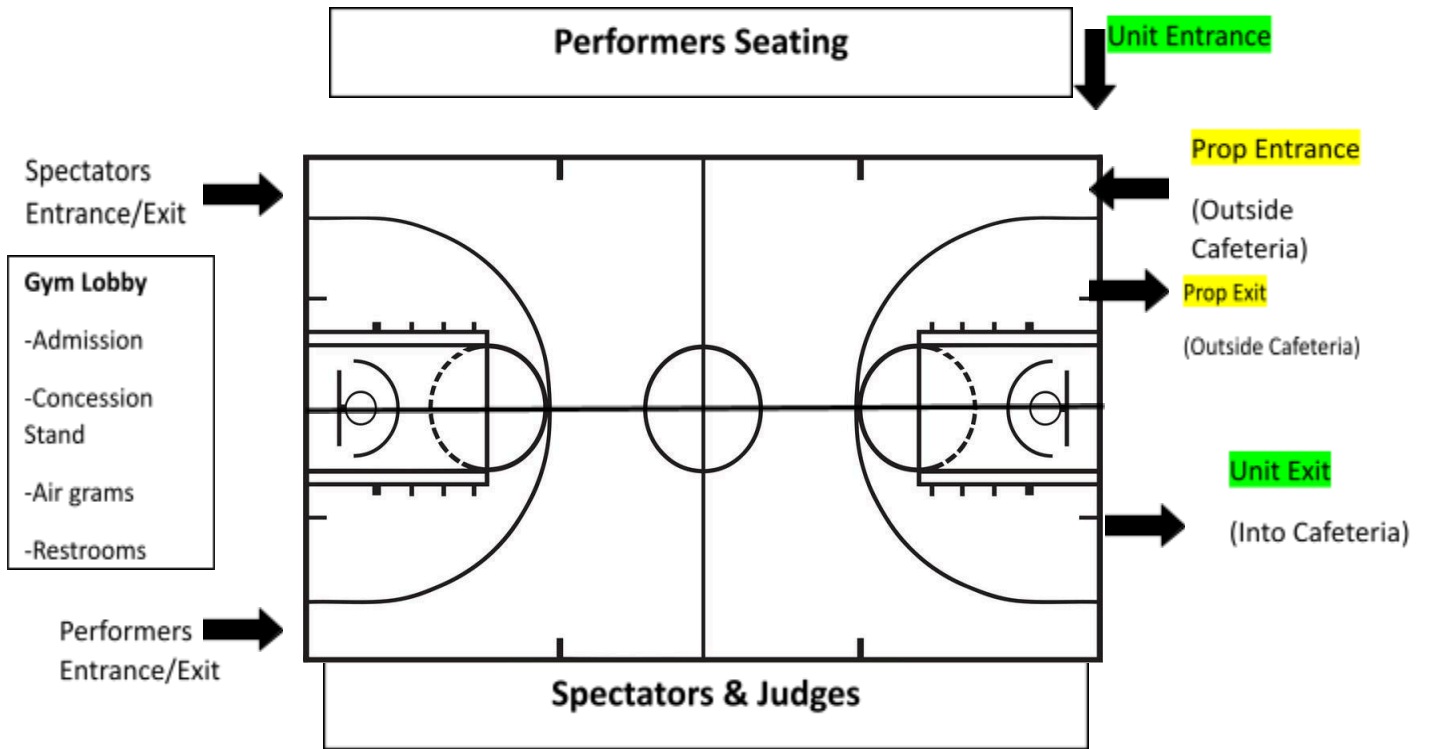
Souvenirs will also be available for purchase.

Online Help and Information

TECA Website: <http://www.go-teca.org>

COLORGUARD

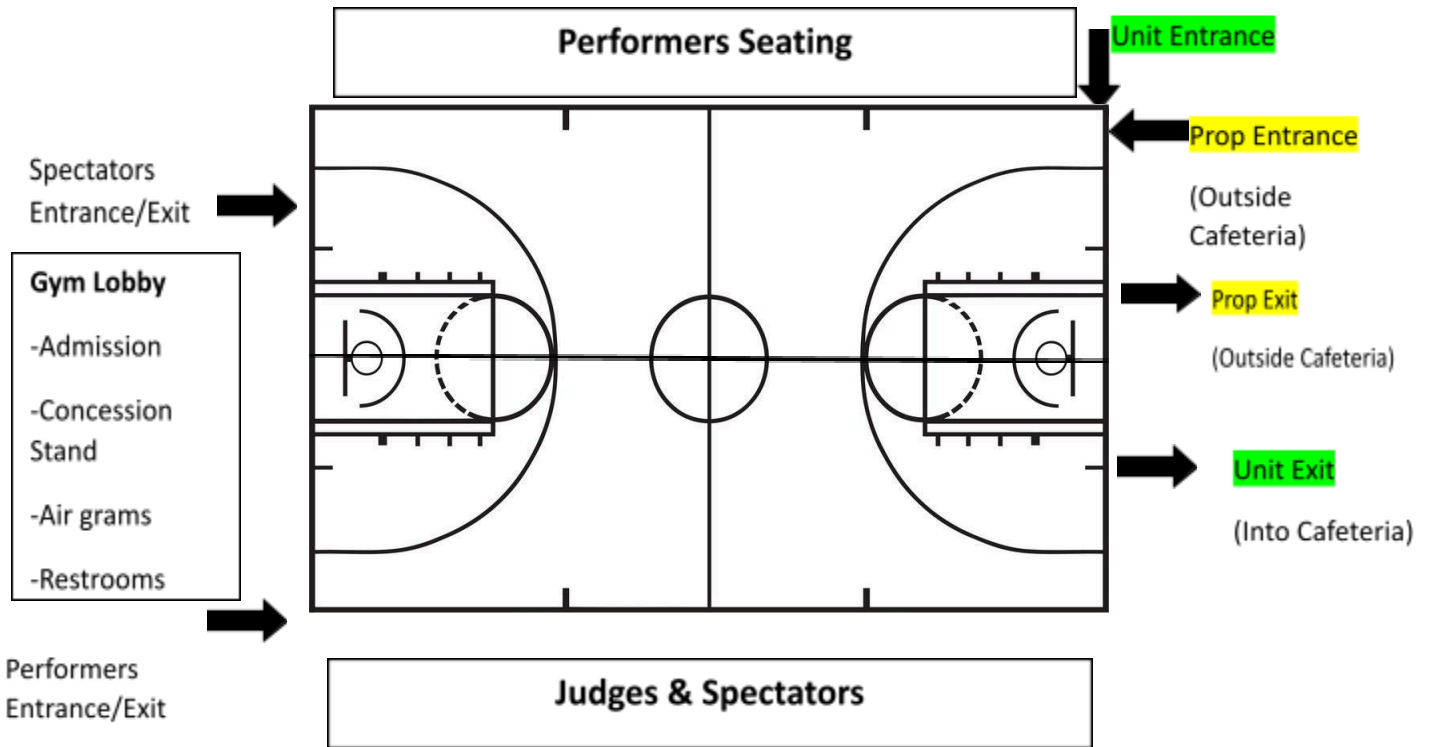
We will be utilizing a HORIZONTAL TIMELINE for the performance area.
(See gym floor map below)



WINDS/PERCUSSION

We will be utilizing a HORIZONTAL TIMELINE for the performance area.

(See gym floor map below)



WESLACO ISD BAG REQUIREMENTS FOR ALL WISD FACILITIES

CLEAR BAG POLICY WILL BE ENFORCED

**CLEAR TOTE NOT TO EXCEED
12" x 6" x 12"**

WE

**1 GALLON
RE-SEALABLE
CLEAR PLASTIC
STORAGE BAG**

OR

**SMALL CLUTCH w/STRAP
NOT TO EXCEED
4.5" x 6.5"**

LARGE BAGS

- Must be: Clear Plastic, Vinyl, or PVC
- Must not exceed 12" x 6" x 12"

No more than one logo, not obstructing contents

SMALL BAGS

- Clutch bag (with/without strap)
- Does not need to be clear
- Must not exceed 4.5" x 6.5"

PROHIBITED BAGS

1. Purses larger than a clutch



2. Printed or patterned plastic or vinyl bags



3. Backpacks (solid or clear)



4. Computer bags



5. Camera bags



6. Oversized tote bags



7. Diaper bags (place diaper bag items in clear bag to gain entry)



8. Mesh or straw bags



9. Briefcases or fanny packs



10. Luggage or duffel bags of any kind



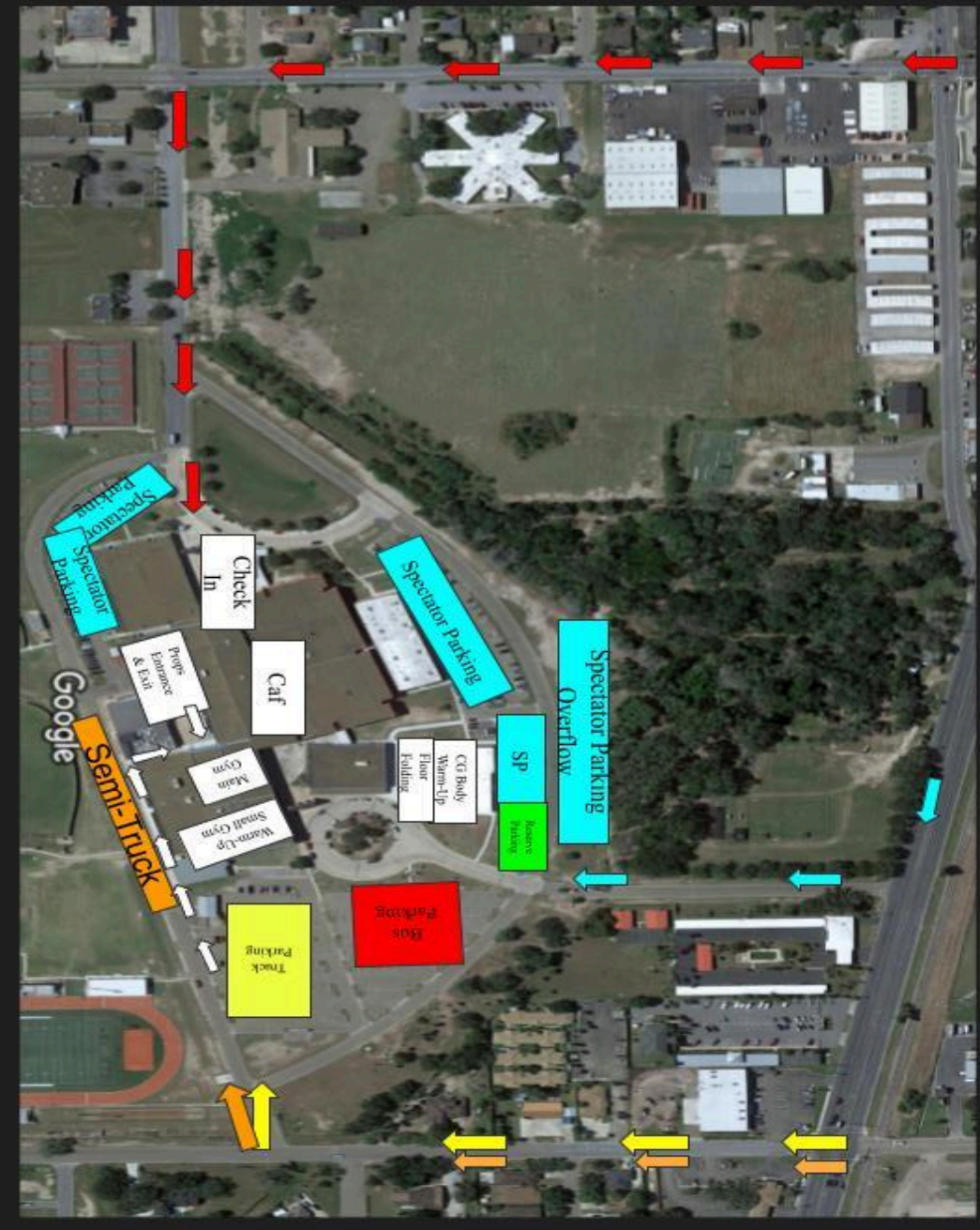
*Exceptions will be made for medically necessary items and diaper bags after proper inspection at designated areas.

Buses-Take Airport Dr.
South turn left on E. 8th St.

Trucks-Enter from Pleasantview Dr.

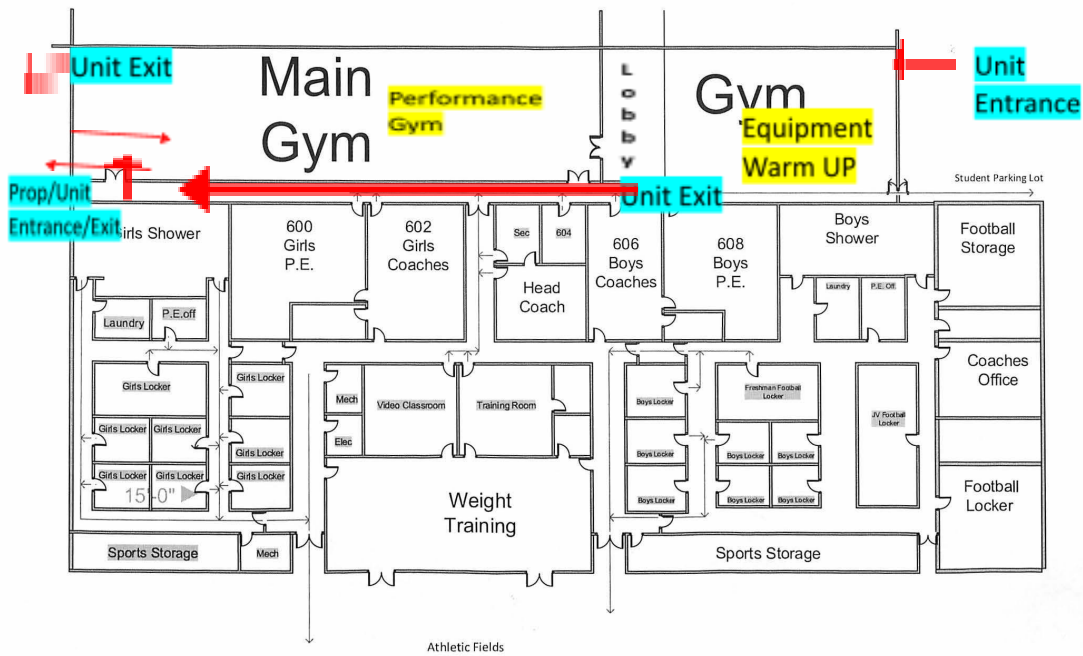
Semi Trucks-Enter from Pleasantview Dr.
Parking is on the back of the school.

Spectators-Take Airport Dr. South turn left Bus 83 and left on Wildcat Dr.





Gymnasium



Band Hall (Body Warm Up- CG Only)

